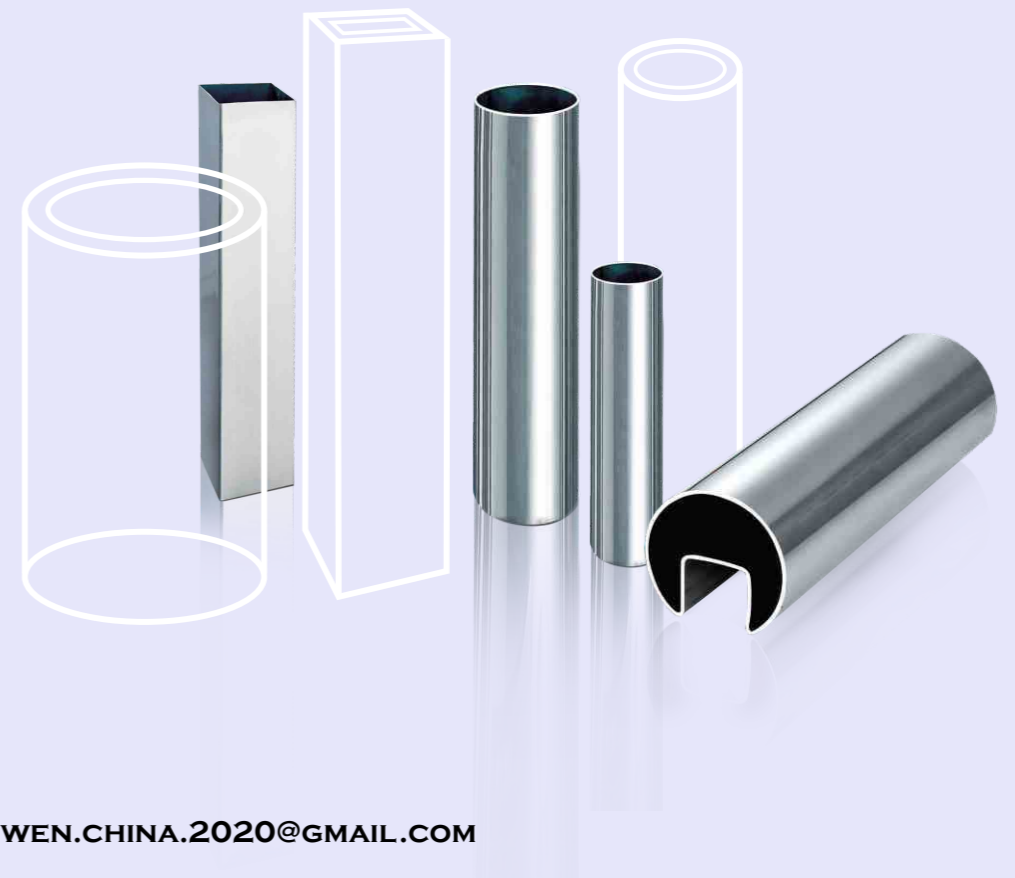




NUWEN

STAINLESS STEEL



ZHONGSHAN NUWEN CO.,LTD.

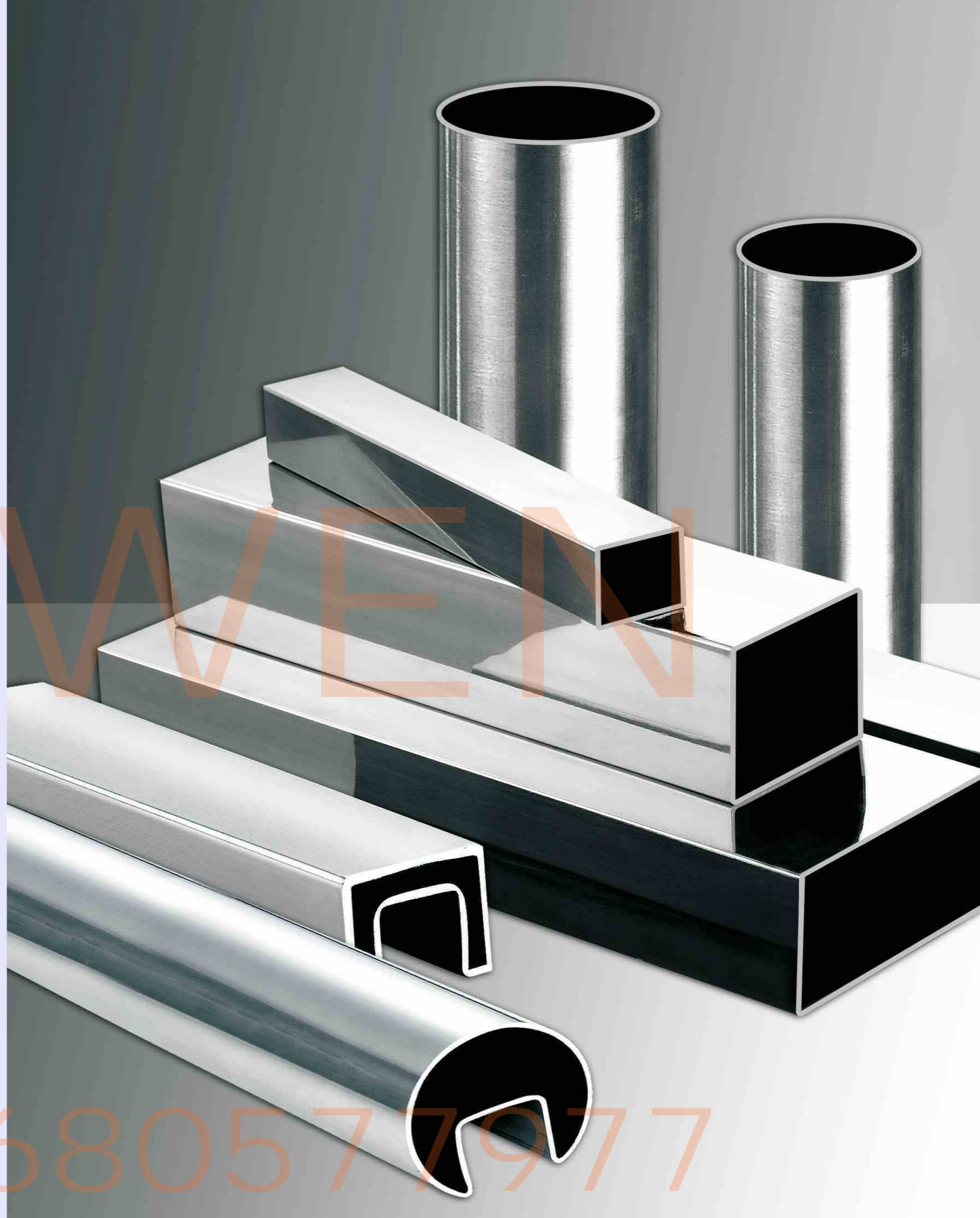
ADD: Unit 1,no.187,Xiayang road,Hetang Town
,Pengjiang District,Jiangmen City,Guangdong
Province , China.

E-EMAIL: NUWEN.CHINA.2020@GMAIL.COM

MOBILE: +86-18680577977

WECHAT/WHATS APP: +86-18680577977

NUWEN[®]
NUWEN



E-EMAIL: NUWEN.CHINA.2020@GMAIL.COM

MOBILE: +86-18680577977

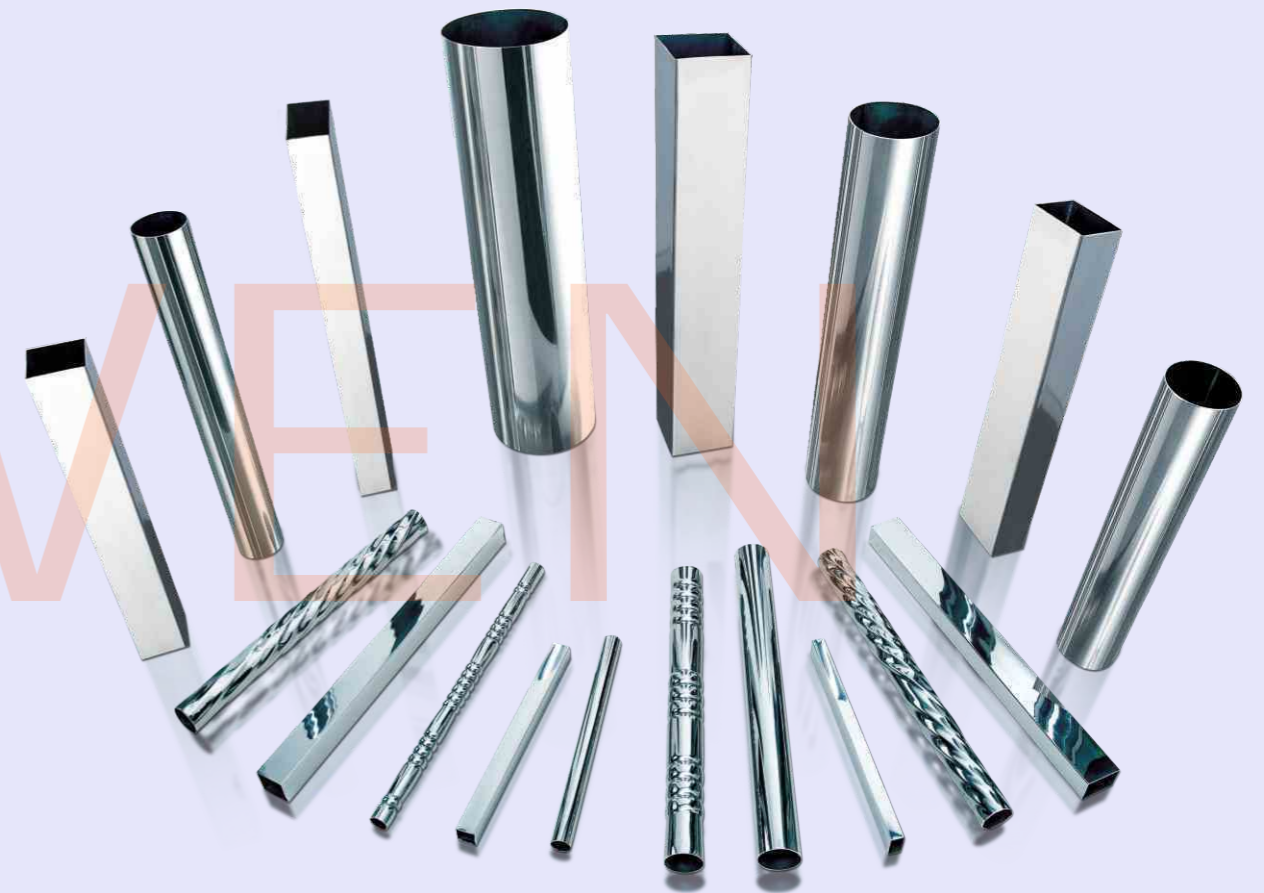
WECHAT/WHATS APP: +86-18680577977

+8618680577977

ASTM A269 / A249

APPLICATION: BOILER, HEATEXCHANGER & CONDENSER

Thickness(mm)		0.5	0.6	0.7	0.8	0.9	1.0	1.2	1.5	2.0	2.5	3.0
Outside Diameter												
(Inch)	(mm)											
1/4"	6.35											
9/32"	7.14											
5/16"	8.0											
3/8"	9.5											
7/16"	11.1											
1/2"	12.7											
5/8"	15.9											
3/4"	19.1											
7/8"	22.2											
1"	25.4											
1 1/8"	28.6											
1 1/4"	31.8											
1 3/8"	35											
1 1/2"	38.1											
2"	50.8											
2 1/4"	57											
2 3/8"	60.3											
2 1/2"	63.5											
3"	76.2											
3 1/2"	88.9											
4"	101.6											
4 1/2"	114.3											
5"	127											
6"	152.4											



O.D ≤ 5/8" Only For ASTM A269
ASTM A269: Bright Annealed

O.D ≥ 3/4" Both ASTM A269 & A249
ASTM A249: Bead removed , Bright Annealed



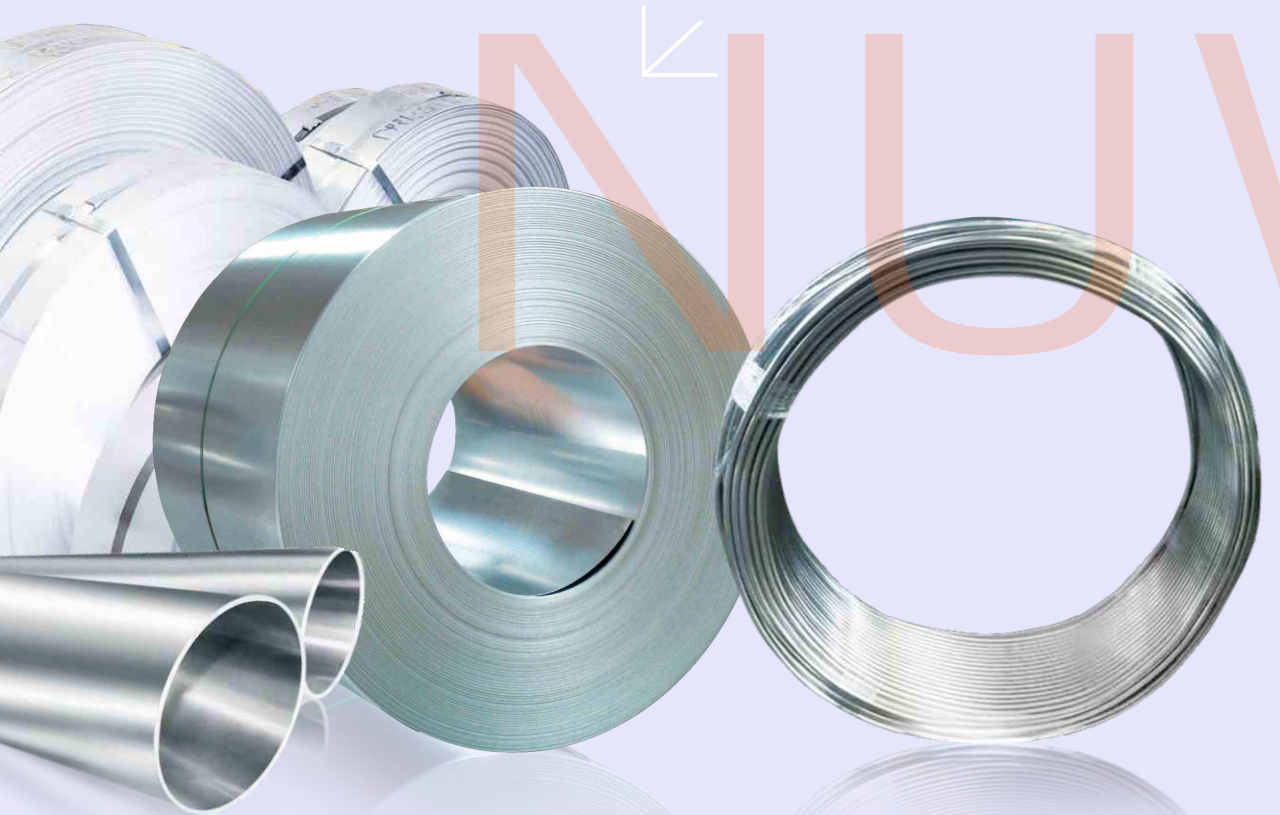
+8613680577977

**TECHNICAL SPECIFICATION
MECHANICAL PROPERTY**

ASTM	Tensile strength (MPa)	Yield strength (MPa)	Elongation (%)	Hardness (HRB)
201(1%nickel)	≥655	≥310	≥40	≤100
202	≥620	≥260	≥40	≤100
304	≥515	≥205	≥40	≤92
304L	≥482	≥170	≥40	≤88
316	≥515	≥205	≥40	≤95
316L	≥485	≥170	≥40	≤95
321	≥515	≥205	≥40	≤95
409	≥380	≥205	≥40	≤80
409L	≥350	≥185	≥22	≤80
430	≥450	≥205	≥22	≤80

CHEMICAL COMPOSITION

ASTM	Chemical composition(%)								
	C	Si	Mn	P	S	Cr	Ni	Mo	Others
201 (1%nickel)	≤0.150	≤1.00	8.5 - 10.0	≤0.060	≤0.030	14.00 - 16.00	≥0.80		N≤0.25
202	≤0.150	≤1.00	7.5 - 10.0	≤0.060	≤0.030	17.00 - 19.00	4.00 - 6.00		N≤0.25
304	≤0.080	≤1.00	≤2.00	≤0.045	≤0.030	18.00 - 20.00	8.00 - 10.50		
304L	≤0.030	≤1.00	≤2.00	≤0.045	≤0.030	18.00 - 20.00	8.00 - 12.00		
316	≤0.08	≤1.00	≤2.00	≤0.045	≤0.030	16.00 - 18.00	10.00 - 14.00	2.00 - 3.00	
316L	≤0.030	≤1.00	≤2.00	≤0.045	≤0.030	16.00 - 18.00	10.00 - 14.00	2.00 - 3.00	
321	≤0.080	≤1.00	≤2.00	≤0.045	≤0.030	17.00 - 19.00	9.00 - 12.00		Ti≥5×C
409	≤0.080	≤1.00	≤1.00	≤0.040	≤0.030	10.50 - 11.75	≤0.50		Ti6×C%≤0.70
409L	≤0.030	≤1.00	≤1.00	≤0.040	≤0.030	10.50 - 11.75	0.50		Ti8×C%≤0.70
430	≤0.120	≤1.00	≤1.00	≤0.040	≤0.030	16.00 - 18.00			



+8618680577977

STAINLESS STEEL ROUND TUBES ASTM A554

Thickness(mm)		0.5	0.6	0.7	0.8	0.9	1.0	1.2	1.5	2.0	2.5	3.0	4.0	5.0	6.0
Outside Diameter															
(Inch)	(mm)														
	6.0														
1/4"	6.35														
9/32"	7.14														
5/16"	8.0														
3/8"	9.53														
	10														
7/16"	11.11														
	12														
1/2"	12.7														
	14														
5/8"	15.9														
	18														
3/4"	19.1														
	20.5(20)														
7/8"	22.2														
	23.5(23)														
1"	25.4														
1 1/8"	28.6														
	30														
1 1/4"	31.8														
1 3/8"	35														
1 1/2"	38.1														
1 5/8"	41.3														
1 3/4"	44.5														
1 7/8"	47.6														
2"	50.8														
2 1/8"	54														
2 1/4"	57														
2 3/8"	60.3														
2 1/2"	63.5														
3"	76.2														
	80														
3 1/2"	88.9														
4"	101.6														
4 1/4"	108														
4 1/2"	114.3														
5"	127														
	133														
	141														
6"	152.4														
	159														
6 5/8"	168														
8"	203.2														
	219.00														
	273.00														

STAINLESS STEEL SQUARE TUBES ASTM A554

Thickness(mm)		0.5	0.6	0.7	0.8	0.9	1.0	1.2	1.5	2.0	2.5	3.0	4.0	5.0	6.0
Outside Diameter															
(Inch)	(mm)														
5/16" x 5/16"	8x8														
	10x10														
1/2" x 1/2"	12.7x12.7														
5/8" x 5/8"	15.9x15.9														
3/4" x 3/4"	19x19														
	20x20														
7/8" x 7/8"	22x22														
1" x 1"	25x25														
	30x30														
1 1/4" x 1 1/4"	31.8x31.8														
1 1/2" x 1 1/2"	38x38														
1 3/8" x 1 3/8"	35x35														
	40x40														
1 3/4" x 1 3/4"	45x45														
2" x 2"	50x50														
	60x60														
	70x70														
3" x 3"	76.2x76.2														
	80x80														
	90x90														
4" x 4"	100x100														

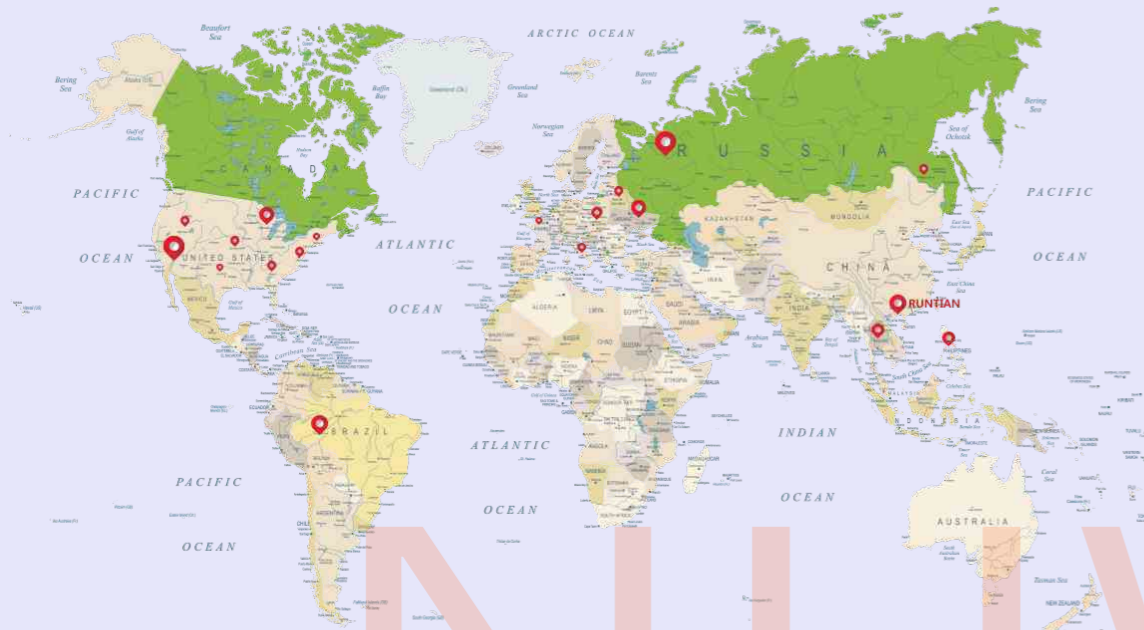
STAINLESS STEEL RECTANGULAR TUBES ASTM A554

Thickness(mm)		0.5	0.6	0.7	0.8	0.9	1.0	1.2	1.5	2.0	2.5	3.0	4.0
Outside Diameter													
(Inch)	(mm)												
	10x20												
1/2" x 1"	12.7x22.2												
	13x25												
	15x30												
	15x50												
	20x30												
	20x40												
	20x50												
1 x 1 1/2"	25x38												
	25x50												
	30x50												
	30x60												
	30x70												
	40x60												
	40x80												
	45x75												
	45x95												
2" x 3"	50x75												
	40x100												
2" x 4"	50x100												
	60x80												
	60x100												
	60x120												

SURFACE: 180# 240# 320# 400# 600#
 MATERIAL: AISI304 304L 316 316L 430

SURFACE: 180#HL 240#HL 320#HL 400# 600#
 MATERIAL: AISI304 304L 316 316L 430

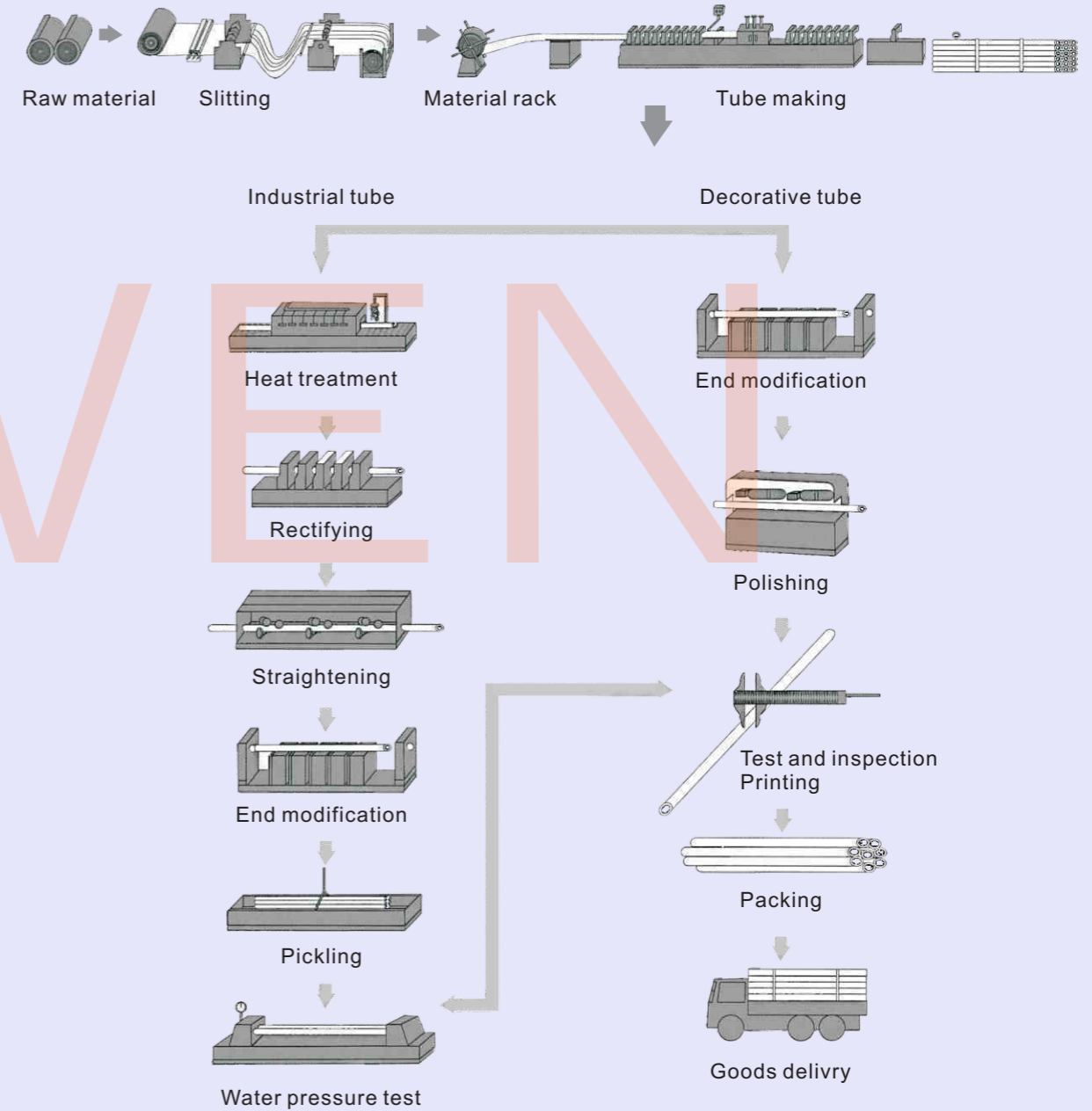
+86 18680577977



▲ zhongshan nuwen Focus on exporting, we have exported to more than 50 countries, mainly in North & South America , Europe, Middle east ,Southeast Asia and so on .



MANUFACTURING PROCESS



+86 18680577977

STAINLESS STEEL SANITARY TUBES ASTMA270

Thickness(mm)		1.2	1.5	1.65	2.0	3.0
Outside Diameter						
(Inch)	(mm)					
1"	25.4					
1 1/4"	31.8					
1 1/2"	38.1					
2"	50.8					
2 1/2"	63.5					
3"	76.2					
3 1/2"	88.9					
4"	101.6					
5"	127					
6"	152.4					

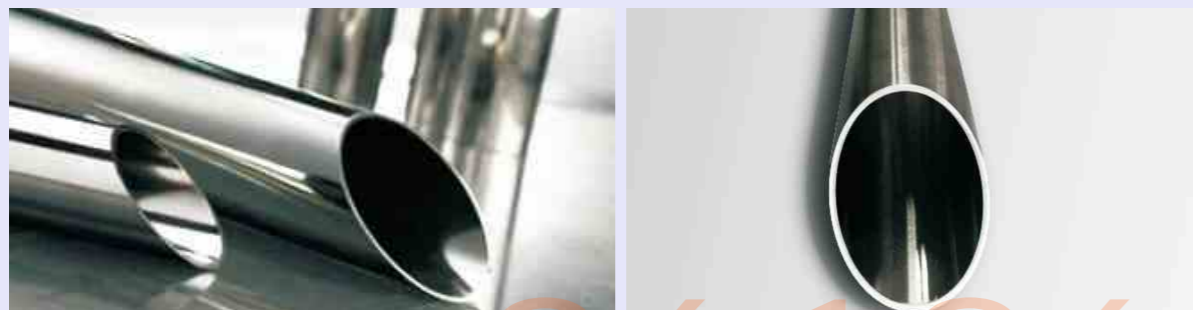
STAINLESS STEEL TUBES 409L/ASTM A268
APPLICATION: AUTOMOBILE EXHAUST

Thickness(mm)		1.0	1.2	1.5	2.0
Outside Diameter					
(Inch)	(mm)				
5/8"	15.9				
3/4"	19.1				
1"	25.4				
1 1/4"	31.8				
1 1/2"	38.1				
1 3/4"	44.5				
2"	50.8				
2 1/8"	54				
2 1/4"	57				
2 3/8"	60.3				
2 1/2"	63.5				
3"	76.2				
3 1/2"	88.9				
4"	101.6				
4 1/4"	108				

DIN11850

Thickness(mm) Outside Diameter	DIN	15	20	25	32	40	50	65	80	100	125	150	200
	O.D		18	22	28	34	40	52	70	85	104	129	154
W.T	1.50	1.50	1.50	1.50	1.50	1.50	1.50	2.00	2.00	2.00	2.00	2.00	2.00

Bead Removed, Bright Annealed ,Inside & Outside Polished



+86 18680577977

PRODUCTION PROCESS



Rolling



Annealed



Slitting



Tube making-A



Tube making -B



Welded tube



Inspection



Polishing



Inspection



Inspection



Packaging



Labelling



Warehousing



Warehousing



Loading



Loading